

When We Say "High-Energy" We Mean Business.

Roto-Max[®] Centrifugal Disc With Up-Flow[®]



The Roto-Max[®] System is the industry standard in reliability, featuring ease of use and available options for your custom process needs.



Roto-Max[®] is our high speed, high energy finishing system for deburring, surface improvements, descaling, and finishing parts made of metal, rubber, or plastic. Roto-Max[®] can reduce vibratory process cycles for deburring of hard metals, rough forgings and castings; yet is gentle enough to provide exceptional surface finishes for jewelry, hardware, and medical implants.

The vortex-shaped path of the mass produces a highly efficient process that is up to 15 times faster than traditional vibratory finishing process.



RM-1N

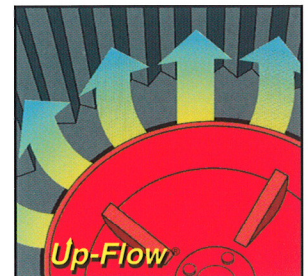
Up-Flow[®] Technology

Our patented Up-Flow[®] feature uses pressurized processing compounds forced up through the seal to keep the seal gap area lubricated and free of abrasive particles. This greatly increases seal life. Compressed air is forced up through the lower seal gap to provide the same benefits for Roto-Max[®] dry process.

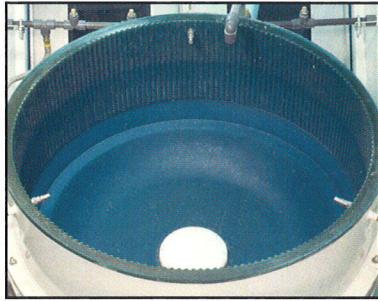
Roto-Max[®] Up-Flow[®] machines are offered in 1, 2, 3, 6, 7 and 10 cu. ft. models. These versatile machines are available as a fully automatic batch finishing system or as semi automatic systems designed to fit your needs.

Roto-Max[®] dry finishing systems are available in 2,3 and 6 cubic foot models.

Whichever model you choose, Roto-Finish machines are fully warranted.



Features And Options For The Roto-Max[®] Automatic



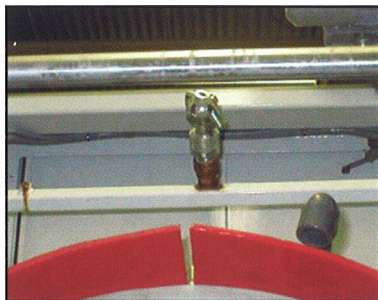
Linings and Geometries:
Application specific linings and geometries are available.



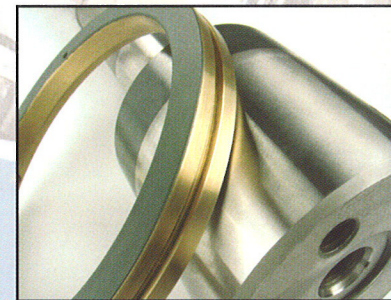
Closed Circuit TV:
Color monitor with camera mounted in the Roto-Max[®] Automatic cabinet for ease of process viewing.



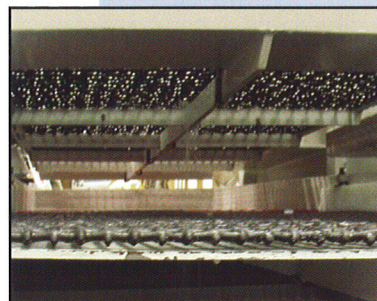
Environmental Package:
Noise cover and internal lighting for the Roto-Max[®] Automatic.



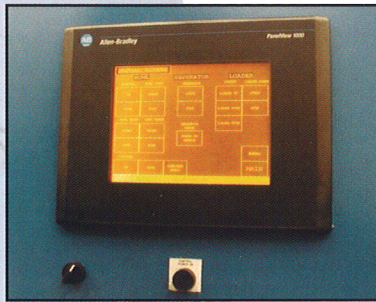
Load Hopper Rinse:
360 degree by 180 degree rotational spray to ensure full coverage of media and work parts.



Exclusive Ceramic Coating:
Critical wear parts are coated with a protective ceramic finish to dramatically increase operational life.

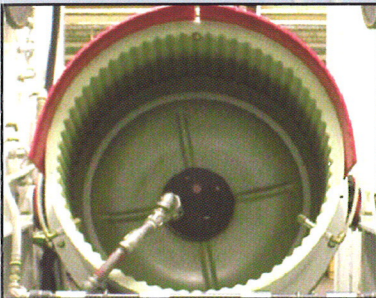


Triple Deck Separator:
Extended triple deck separator parts/media/chip tray for classifying media.



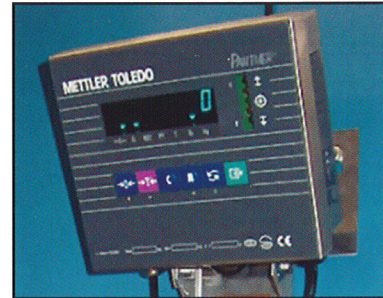
Variable Speed Control:

Fully automatic with HMI and variable speed control for user friendly operations.



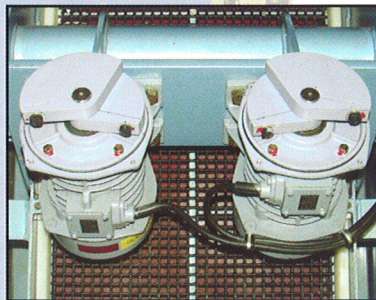
Bowl Rinse:

Inverted spray system is designed to clean residual media, parts or compounds from the bowl.



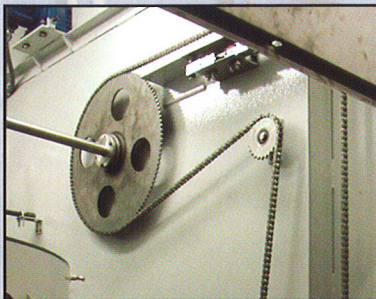
Media Level Sensor:

Sensor with warning indicator to alert operator when media level is low.



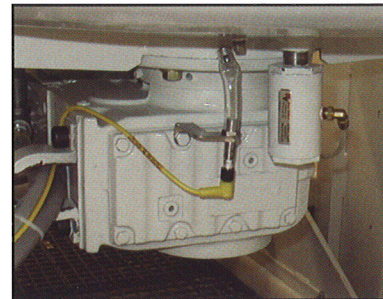
Eccentric Weights:

Easily adjusted eccentric weights to control amplitude.



Stainless Steel Option:

Includes stainless steel hopper, drop guard, sprocket, sprocket drive shaft, chain, connecting links, bushings, and applicable hardware.

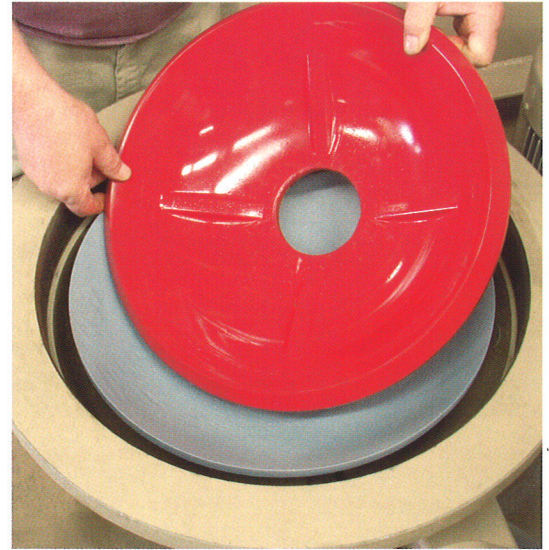


Seal Failure Sensor:

Designed to protect the machine's drive system.

**With the Roto-EZ-Line System,
downtime is a thing of the past.**

Traditionally the relining and associated downtime with centrifugal disc machines has been a draw back for some customers. Roto-Finish has solved this issue with our Roto-EZ-Line system. In short, your personnel can do a reline of the spinner in your facility in as little as 1 hour. This is huge advantage to anyone interested in centrifugal disc finishing. *(Not yet available on all models.)*



Roto-EZ-Line system

Roto-Max® Specification Chart

Machine Model	Process Capacity Cu. Ft.	Length	Width	Height	Process Bowl Height	Process Bowl Diameter	Motor Horse Power	460 V Amp. Load	230 V Weight	Approx. Shipping
RM-1N	.75	50	41	61	46	19	3	6	12	1,490
RM-1P	.75	98.6	41	61	46	19	3	6	12	2,875
RM-1SC	.75	81.5	49.5	87	57.8	19	3	6	12	1,850
RM-2N	2	56	56	64	59.5	25.5	5	8.6	16.2	2,900
RM-2P	2	65.8	56	64	59.5	25.5	5	8.6	16.2	3,100
RM-2A	2	87.5	56	132	60	25.5	5	8.6	16.2	5,900
RM-3N	3	56	56	64	63.5	25.5	7.5	14.0	25.0	2,900
RM-3P	3	65.8	56	64	63.5	25.5	7.5	14.0	25.0	3,100
RM-3A	3	87.5	55	132	72	25.5	7.5	14.0	25.0	6,100
RM-6P	6	75.6	66	82	76.5	37.5	10	17.0	31.0	5,115
RM-6A	6	100	76	153	81	37.5	10	17.0	31.0	8,600
RM-7P	7	75.6	66	82	76.5	37.5	10	17.0	31.0	5,115
RM-7A	7	100	76	153	81	37.5	10	17.0	31.0	8,700
RM-10P	10	123.5	84	104.4	99.4	42.5	30	48.0	88.0	8,500
RM-10A	10	142	94	165	111.3	42.5	30	48.0	88.0	12,200

N – No Separation
A – Fully Automatic

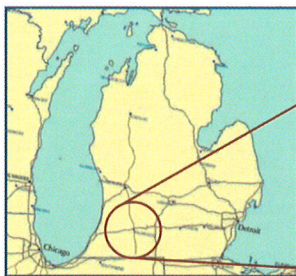
P – Power Separation
SC – Built-In Separation (RM-1 only)

Our current product line includes:

- Automatic buff, brush and polishing systems
- Robotic finishing systems
- Grinding and polishing machinery for a variety of markets
- Vibratory and mass finishing systems
- Compound and media for mass finishing
- Flat and OD cylindrical finishing machines
- Dust collectors
- Waste water treatment and recirculation systems
- Drum and belt aqueous parts washing and drying systems
- High energy centrifugal disc and centrifugal barrel finishing equipment
- Multi-Pass® continuous vibratory finishing equipment
- SpiraBlast fixtureless vibratory blast systems.



Hammond Roto-Finish process lab and processing laboratory specialists are available to select the right process, the right machine, the right media, and the right Roto-Brite compound for your finishing needs. You are invited to be present during the testing, and we welcome our visitors to take a complete plant tour. Let us show you why we are "First in Finishing"!



1600 Douglas Avenue. Kalamazoo, MI 49007-1690 USA

Phone: (269) 345-7151 Fax: (269) 345-1710 www.roto-finish.com